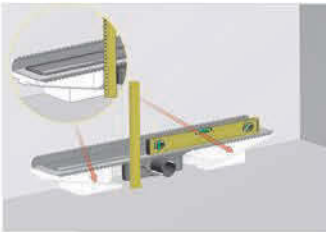
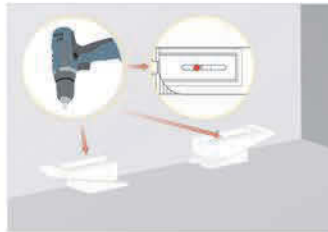


Sideward Output Application Steps

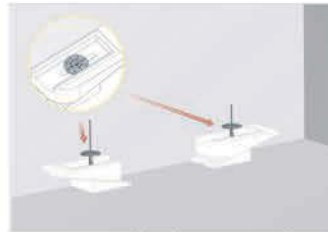
compactline series



Adjust height adjusting set with scale according to the ground level. Each step is 2mm.



Make a hole from the inside of channel to fix height adjusting sets.

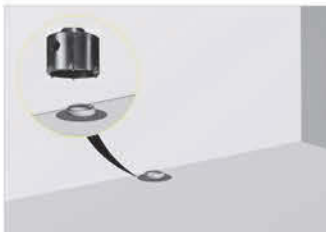


Fix the adjusting set with special styropor dowel.



Place the insulation-finish metal case to the adjusting set.

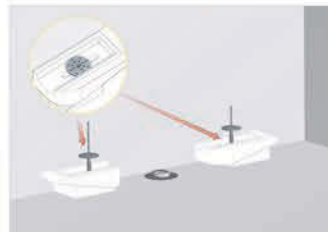
Bottom Output Application Steps



Drill the layer concrete with the help of drilling core for the pipe connection.



Make a hole from the inside of channel to fix height adjusting sets.



Fix the adjusting set with special styropor dowel.



Place the insulation-finish metal case to the adjusting set.

Other Steps



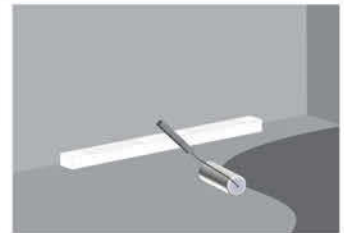
Connect the shower channel to the installation and put the protective styropor on it in case of blockage.



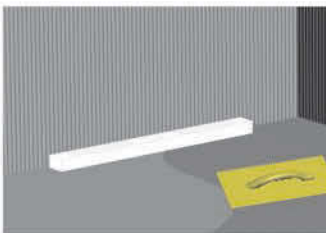
Bevel the slant of leveling concrete min. 1% towards shower channel.



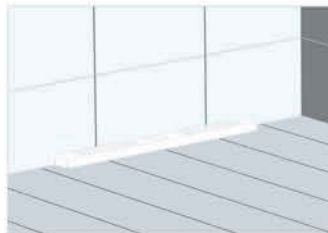
Apply priming coat to leveling concrete. Adhere the isolation tape to the metal-concrete.



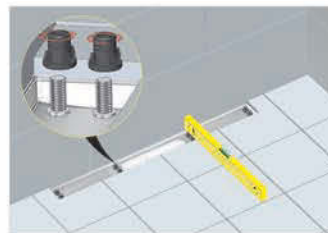
Insulate the whole surface min 2-layer with sliding isolation.



Spread the ceramic adhesive to the surface.



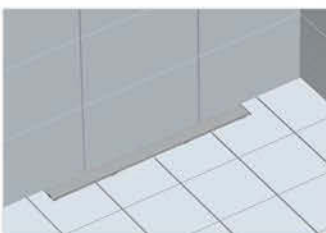
Do not remove the protective styropor until the ceramic application is completed.



Remove the protective styropor and adjust the level through adjusting screw in metal sash with scale from each point.



Place the adjusting screws in metal sash.



Install the fixer covers again after the adjustment process and then place the cover.



Remove the cover with the help of switch according to your use frequency and then clean it.



Remove the siphon with the help of switch according to your use frequency and then clean it.



Place the siphon to the cleaned tank without leaving a blank.